



RIVERWALK OUTLETS

Event Space Rentals & Advertising Opportunities

Yvette Gremillion-Watkins, General Manager
504-684-1931 | ywatkins@riverwalkno.com

Troy Thibodeaux, Assistant General Manager
504-684-1956 | tthibodeaux@riverwalkno.com

Why Riverwalk?

- Conveniently located near several popular attractions including the French Quarter, Audubon Aquarium of the Americas, Caesars Casino, and Bourbon Street, making it a great option for event rentals.
- Attractive views of the Mississippi River, viewable from the Food Court Balcony and Spanish Plaza, which create memorable moments for visitors to cherish.
- Parking validation program allowing guests to receive a discounted rate of \$8.00.
- Dynamic blend of shopping, dining, entertainment, and cultural experiences, Riverwalk Outlets is a must-visit destination for both locals and tourists.



- Nearly 20,000+ hotel rooms within walking distance.
- Steps away from the Convention Center, Cruise Terminal, Caesars Casino, Audubon Aquarium, French Quarter, CBD and Warehouse District.
- Minutes away from the Superdome, Smoothie King Arena and Saenger Theater.

Key Features

- Iconic Riverfront Views and Ideal Proximity to Hotels, Venues, and Shopping
- Newly Renovated Fountain with Customizable Lighting Features
- Secure Egress and Regress: Public, Private, or Semi-Private Setup
- No Exclusive Venue Sponsors, Vendors or Concessionaires
- In-House, Security Available



Permitting

City of New Orleans Permitting:

- Events held on Spanish Plaza require a Special Event permit from the City of New Orleans which the Organizer is responsible for obtaining.
- City of New Orleans event permit and application info can be found at: <https://onestopapp.nola.gov/>
- If alcohol is being served at your event the beverage vendor must also carry a permit from The Louisiana Office of Alcohol and Tobacco Control.
- Permit type needed varies by vendor. For more information visit <http://www.atc.rev.state.la.us/>

Port of New Orleans Permitting:

- Events using the Lower Wharf (Zone 4) portion of the Event Space must submit an event application to the Port.
- The Port of New Orleans has an event application form available by request from eventpermits@portnola.com. Please submit the form at least four weeks prior to the event.

EMS:

- EMS service requirements vary by event. For more information or to schedule coverage for your event visit <https://www.nola.gov/ems/services-we-provide/special-events/>

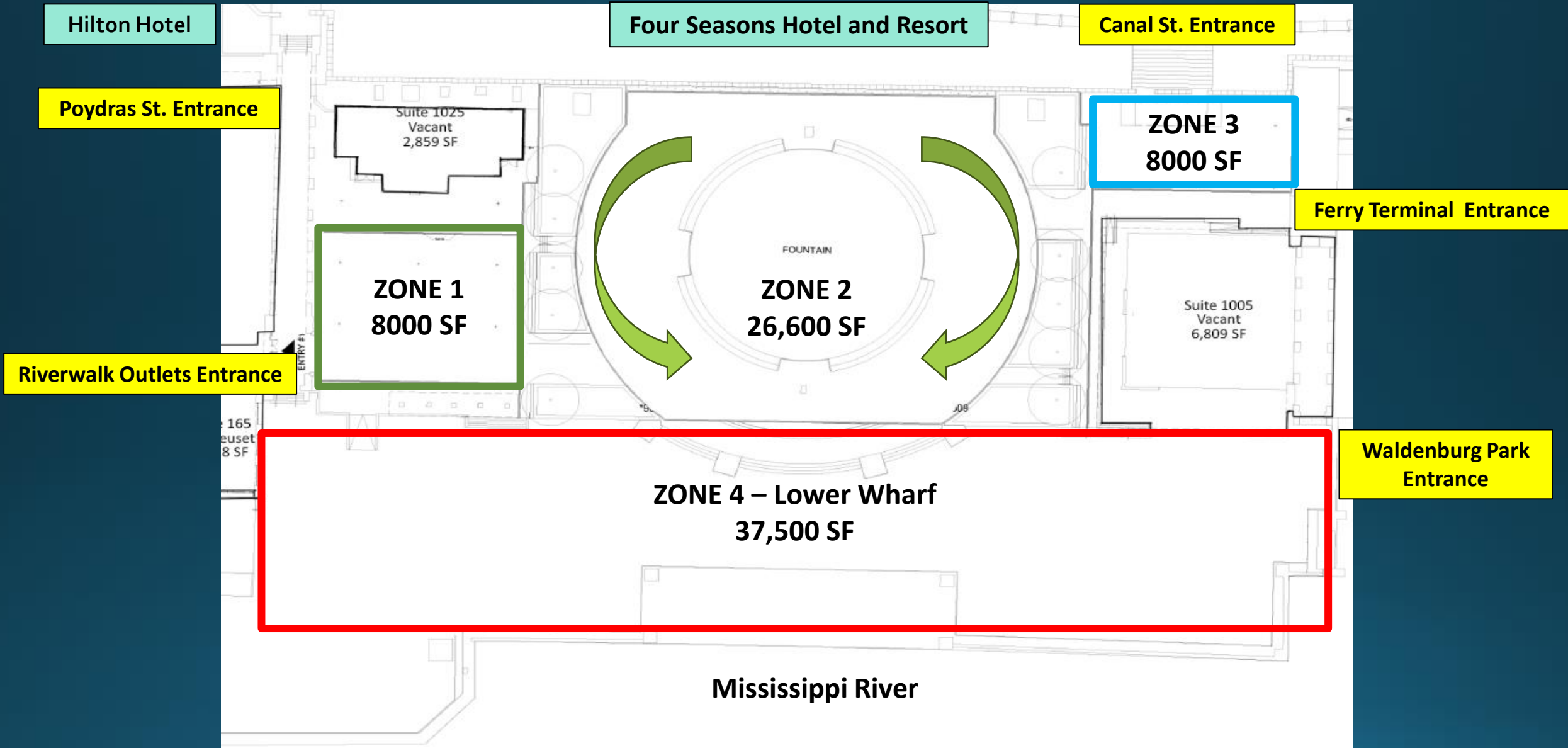


Venue Regulations

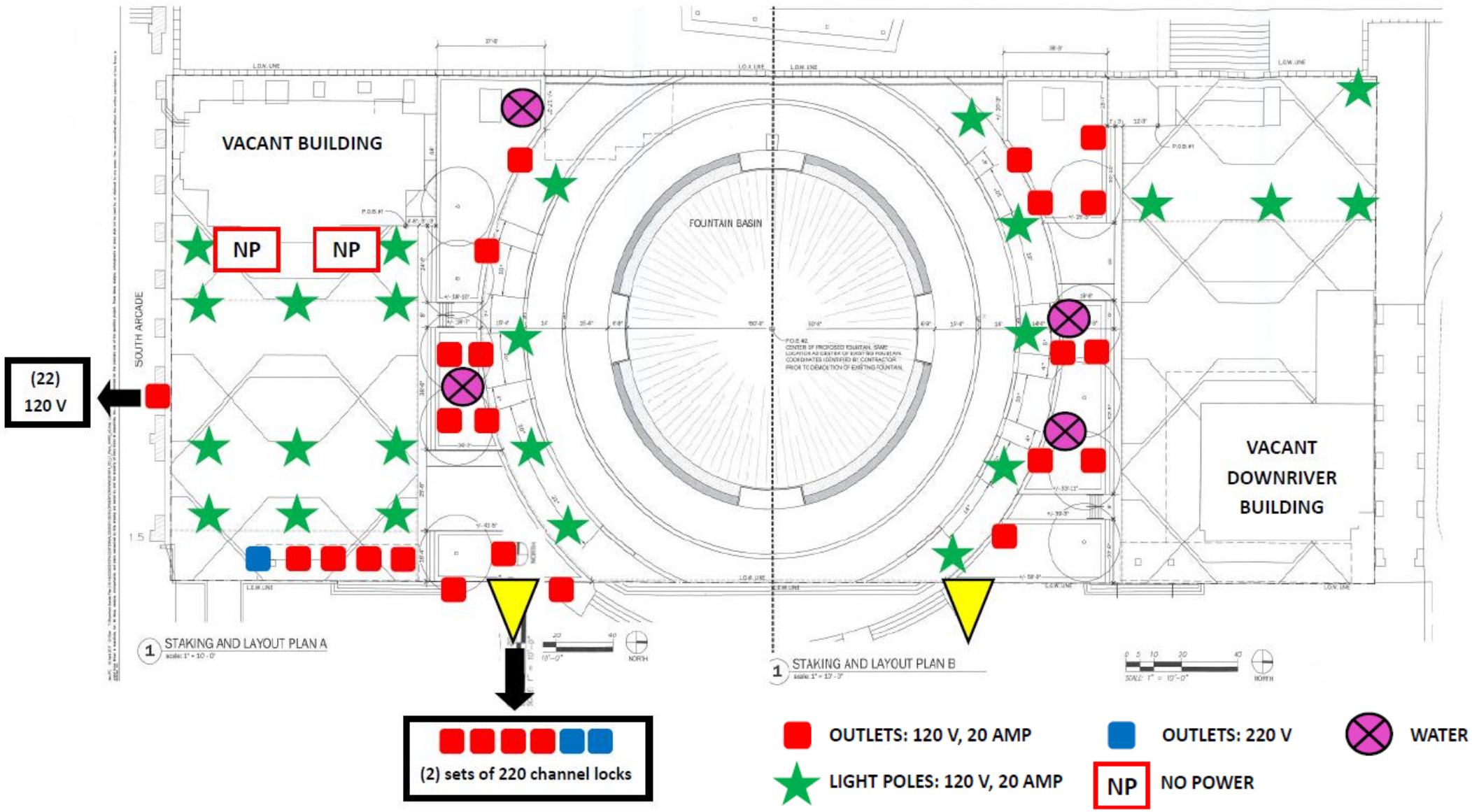
- Amplified sound must be cutoff at 10PM unless otherwise approved.
- Event elements or vehicles on the Lower Wharf must not exceed 150 psf.
- If a food truck is being used at the event, they must place a mat under any generators or exterior equipment that could stain the Plaza pavers.



Layout Map



Utility Layout Map



Spanish Plaza – Private Event



Spanish Plaza – Lundi Gras



Spanish Plaza – Past Events



Food Court and Julia St Bridge



Food Court and Food Court Balcony



Advertising



POYDRAS ST. SIGNS

(Hilton circle portal panels)

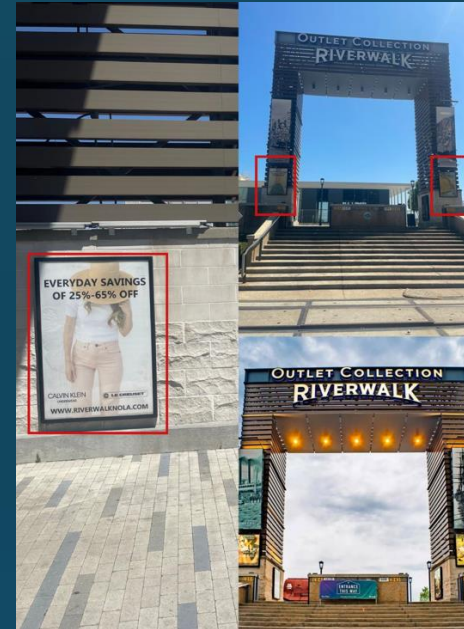
46" x 67"

Specs:

Add 1/8 inch bleed

File Type: PDF

2 Exterior Ad Panels on Poydras St. entrance leading into Spanish Plaza beside the Four Seasons Hotel, and the Hilton Riverside Hotel entrance.



CANAL STREET SIGNS

(2- on the portal facing each other by the steps to Spanish Plaza)

46" x 67"

Specs:

Add 1/8 inch Bleed

File Type: PDF

4 Exterior Ad Panels on Canal St. Entrance leading into Spanish Plaza next to the ferry terminal beside the Four Seasons Hotel.



POYDRAS ST. SIGNS

(2- Stairs by train track panels)

26" x 42"

Specs:

Add 1/8 inch bleed

File Type: PDF

2 Exterior Ad Panels on Poydras St. entrance leading into Spanish Plaza Four Seasons Hotel entrance, and the Hilton Riverside Hotel entrance.



QR CODE - FOOD COURT TABLE ADS

100+ Tables

Specs

4x4

Material: Weather proof Vinyl Sticker

File Type: JPEG or PNG

Locations

Food Court and Balcony

Advertising



JULIA ST. SIGNS

(2 - Portal facing toward convention center Blvd. - Outdoor)

46" w x 67" h

Specs:

Add 1/8 inch bleed

File Type: PDF

2 Exterior Ad Panels on Julia Street entrance beside the Convention Center, leading into Level C - Food Court. (2 - Portal facing toward convention center blvd)



OVERHEAD SEMI-CIRCLE WALKWAY BANNERS

5'h x 10'w

"Half Moon"

5 locations/ 10 faces

Specs:

Full Panel Size: 48" x 96"

Double sided

Template to be provided

File Types: PDF

*Locations: HM1, HM2, HM3, HM4, HM5



JULIA ST. SIGNS

(2 - Portal facing each other - Outdoor)

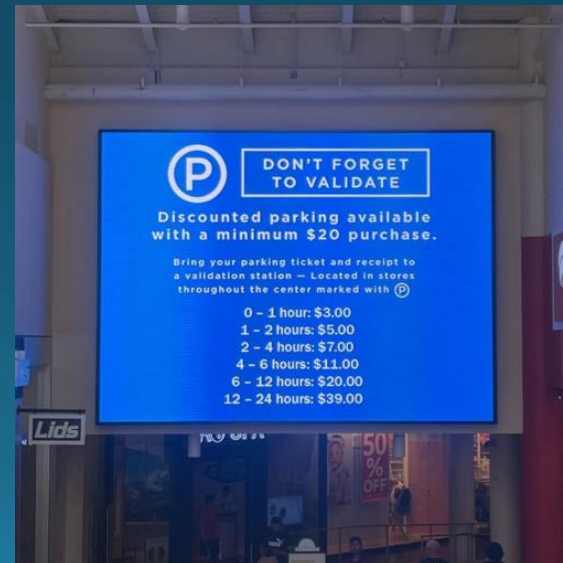
46" x 67"

Specs:

Add 1/8 inch bleed

File Type: PDF

2 Exterior Ad Panels on Julia Street entrance beside the Convention Center, leading into Level C - Food Court. (2 - Portal facing each other)



LED SCREEN

180" x 240"

15 Second Spots

16 Spots Per Loop

8 Min Loop

(4 min ads/4 min content)

Specs:

912 x 672 px

File Type: JPEG

Advertising



BACKLIT WALL FRAMES

48" x 72"

5 Commercial Faces across the center

Specs:

Full Directory Panel Size: 47" x 69"
single sided

Add 1" bleed - 3" offset. All Sides for Content
File Types: PDF

***Locations: W1, W2, W3, W4, W5**



COLUMN WRAP

47" x 69"

21 Commercial faces across the center

Specs:

Full Directory Panel Size: 47" x 69"
single sided

Add 1" bleed - 3" offset. All Sides for Content
File Types: PDF

***Locations: C1, C2, C3, C4, C5, C6, C7, C8, C9, C10, C11, C12, C13, C14, C15, C16, C17, C18, C19, C20, C21**



HANGING BANNERS

120" x 168"

5 Locations on Concourse Level C
2 - Sided

Specs:

Standard full banner size: 10' x 14'
double sided

Add 1" bleed
File Type: PDF

***Locations - B1, B2, B3, B4, B5**



RIVERWALK OUTLETS

Yvette Gremillion-Watkins,
General Manager
504-684-1931
ywatkins@riverwalkno.com

Troy Thibodeaux
Assistant General Manager
504-684-1956
tthibodeaux@riverwalkno.com